

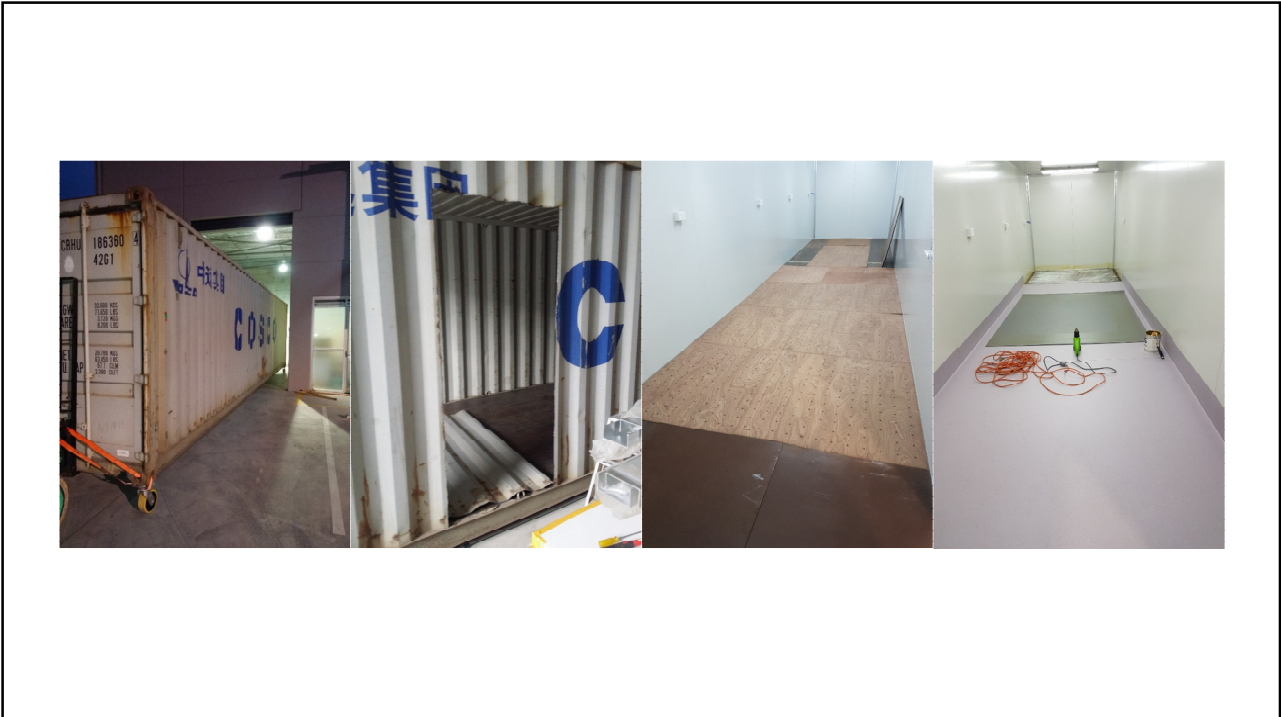
What about contamination ?

This study is often misquoted as it found higher than normal levels of lead in **honey bees**.....but not the honey.

“Honey collected from hives across Sydney contained negligible amounts of lead and didn’t exceed a concentration of 22 $\mu\text{g}/\text{kg}$. However, the amount of lead found in the honey of Broken Hill city bees, which had an average concentration of 295 $\mu\text{g}/\text{kg}$, was more than ten times the maximum of the bees measured in Sydney,” said Professor Taylor.







Broodminder hive telemetry



